

PRODUCTS GUIDE



HT-COOLING
made to measure

THE RIGHT SOLUTION FOR EVERY APPLICATION

Our products can be flexibly applied in the industrial field, matching **the most different production requirements**, enhancing **PERFORMANCES** and boosting production rates.

The function of a cooling system is to dispose of the heat produced by each single production process. To do this you need:



Three simple rules that are **essential for us to provide our customers with reliable, efficient and technically advanced solutions.**

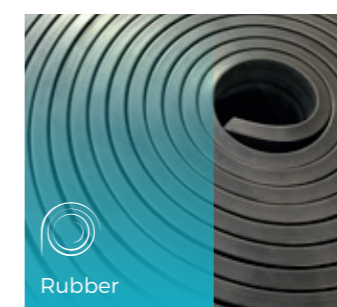
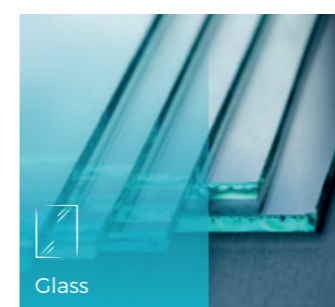
PLASTIC APPLICATION

Plastics are the most popular materials for the production of parts and articles for the end-use, from consumer products to medical devices. They are a versatile category of materials, with thousands of polymer options to choose from, each with its own specific mechanical properties. Knowing the plastic process allows us to provide different solutions, which are functional to the type of application.



INDUSTRIAL APPLICATION

Industrial applications require precise temperature control at every stage and with variable working conditions. A correct cooling process allows to achieve remarkable results in terms of production rate and quality of the finished product, that's why it is very important to know and to choose the most suitable solution able to match the specific needs of each customer.



PROCESS WATER CHILLERS



CS-BS series

❄️ 3/15 kW



| Size | 3 | 4 | 8 | 12 | 16 |
|-----------------------------|-----|-----|-----|------|------|
| Nominal Cooling Capacity kW | 3,4 | 4,3 | 8,0 | 12,0 | 15,0 |



CS-BL series

❄️ 20/110 kW



| Size | 20 | 25 | 30 | 40 | 45 | 50 | 55 | 75 | 90 | 110 |
|-----------------------------|------|------|------|------|------|------|------|------|------|-------|
| Nominal Cooling Capacity kW | 20,0 | 26,0 | 32,0 | 40,0 | 45,0 | 50,0 | 56,0 | 75,0 | 91,0 | 112,0 |



CS-P series

❄️ 120/290 kW



| Size | 120-M | 140-M | 120 | 140 | 170 | 200 | 220 | 250 | 290 |
|-----------------------------|-------|-------|-------|-------|-------|-------|-------|-------|-------|
| Nominal Cooling Capacity kW | 127,4 | 144,1 | 110,7 | 144,1 | 174,4 | 197,7 | 221,5 | 254,9 | 288,2 |



CS-PE series

❄️ 70/200 kW



| Size | 70 | 80 | 90 | 100 | 120 | 140 | 150 | 170 | 190 | 200 |
|-----------------------------|------|------|------|-------|-------|-------|-------|-------|-------|-------|
| Nominal Cooling Capacity kW | 73,7 | 82,3 | 92,8 | 101,0 | 122,8 | 135,4 | 151,5 | 170,2 | 188,0 | 202,7 |



CS-HP series

❄️ 340/820 kW



| Size | 330 | 360 | 400 | 440 | 480 | 520 | 590 | 680 | 750 | 820 |
|-----------------------------|-------|-------|-------|-------|-------|-------|-------|-------|-------|-------|
| Nominal Cooling Capacity kW | 339,0 | 359,0 | 403,0 | 442,0 | 485,0 | 520,0 | 593,0 | 678,0 | 750,0 | 822,0 |



CS-HPE series

❄️ 220/1510 kW



| Size | 220 | 290 | 320 | 350 | 380 | 430 | 470 | 510 | 570 | 640 | 730 | 800 | 940 | 1100 | 1300 | 1400 | 1500 |
|-----------------------------|-------|-------|-------|-------|-------|-------|-------|-------|-------|-------|-------|-------|-------|---------|---------|---------|---------|
| Nominal Cooling Capacity kW | 220,3 | 288,2 | 320,3 | 346,3 | 380,2 | 436,5 | 474,7 | 511,2 | 568,2 | 644,8 | 737,3 | 798,8 | 943,9 | 1.121,7 | 1.296,1 | 1.436,7 | 1.506,1 |

PROCESS AIR CHILLERS



AC-C series

❄️ 10/88 kW



| Size | 120 | 200 | 380 | 600 | 700 | 800 | 1000 |
|-----------------------------|------|------|------|------|------|------|------|
| Nominal Cooling Capacity kW | 10,2 | 16,5 | 31,0 | 48,0 | 56,0 | 65,0 | 88,0 |



AC-S series

❄️ 45/150 kW



| Size | 200-T | 380-BT | 380-PT | 380-HPT | 600-PT | 600-HPT | 800-BT | 800-PT | 800-HPT |
|-----------------------------|-------|--------|--------|---------|--------|---------|--------|--------|---------|
| Nominal Cooling Capacity kW | 45,7 | 50,5 | 59,2 | 64,0 | 95,7 | 113,1 | 100,5 | 118,3 | 149,6 |

DRY AND ADIABATIC COOLERS



DC-DH series

❄️ 30/540 kW



| Size | 30-1R | 40-1R | 60-1R | 110-1R | 150-1R | 200-1R | 260-2R | 300-2R | 350-2R | 410-2R | 450-2R | 500-2R | 540-2R |
|-----------------------------|-------|-------|-------|--------|--------|--------|--------|--------|--------|--------|--------|--------|--------|
| Nominal Cooling Capacity kW | 29,0 | 44,0 | 56,0 | 112,0 | 150,0 | 205,0 | 263,0 | 304,0 | 354,0 | 413,0 | 453,0 | 504,0 | 539,0 |



DC-DV series

❄️ 60/710 kW



| Size | 60-V1 | 100-V1 | 160-V1 | 180-V1 | 240-V1 | 270-V1 | 230-V2 | 260-V2 | 290-V2 | 310-V2 | 360-V2 | 430-V2 | 480-V2 | 540-V2 | 600-V2 | 710-V2 |
|-----------------------------|-------|--------|--------|--------|--------|--------|--------|--------|--------|--------|--------|--------|--------|--------|--------|--------|
| Nominal Cooling Capacity kW | 60,0 | 108,0 | 163,0 | 182,0 | 240,0 | 275,0 | 230,0 | 260,0 | 290,0 | 310,0 | 360,0 | 430,0 | 480,0 | 540,0 | 600,0 | 710,0 |

PUMP AND TANK GROUPS

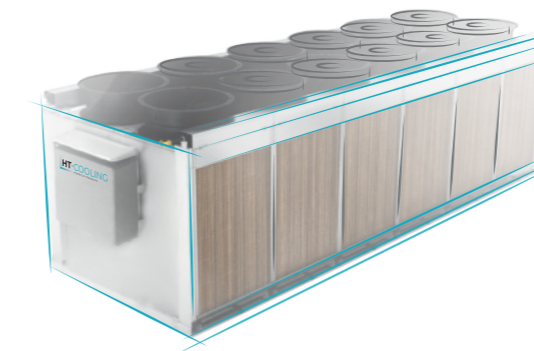


HS-BT series



📄 3/500 m³/h

🛢️ 500/5000 lt



DC-W series

❄️ 95/1100 kW



| Size | 100-V1 | 170-V1 | 250-V1 | 280-V1 | 360-V1 | 420-V1 | 360-V2 | 410-V2 | 440-V2 | 480-V2 | 550-V2 | 650-V2 | 730-V2 | 820-V2 | 900-V2 | 1100-V2 |
|-----------------------------|--------|--------|--------|--------|--------|--------|--------|--------|--------|--------|--------|--------|--------|--------|--------|---------|
| Nominal Cooling Capacity kW | 95,0 | 170,0 | 256,0 | 280,0 | 365,0 | 418,0 | 357,0 | 406,0 | 443,0 | 479,0 | 549,0 | 656,0 | 729,0 | 820,0 | 902,0 | 1.085,0 |

Via Giovanni Paolo II, 1
27029 Vigevano (PV)
T. +39 0381 988070

info@ht-cooling.com
www.ht-cooling.com

HT-COOLING
made to measure